

ABOUT US



POWER ENERGY



CONTACT US

Power Energy is the leading service provider in INDUSTRIAL UTILITY operations and maintenance. Power Energy provides Operation & Maintenance for almost all Industrial UTILITY like Boiler, TFH, Turbine, Chiller, Compressor, Cooling Tower, Water Treatment Plant, Effluent Treatment Plant, D.G Set, and HVAC systems etc.

229/2, Manoshi Para, Garui West, Dum
Dum, Kolkata-700 065
9903874155/
8240800834
p.energy4155@gmail.com

**ENERGY
CONSULTANT**

www.powerenergy.co.in/



OUR COMPANY

Power Energy helps to achieve utility and energy cost-reduction goals. By customizing our Operation and Maintenance (O&M) Services option, we can stabilize or lower overall utility expenses. Our goal is to implement utility best practices that will maximize efficiency in the face of rising energy costs.



POWER ENERGY

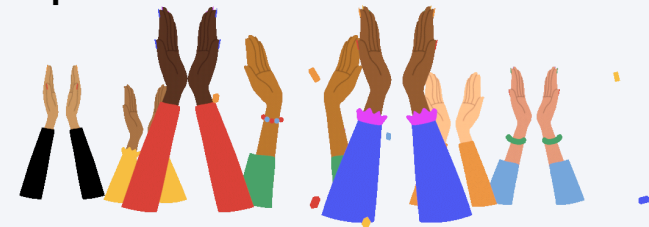
OUR CONSULTANTS ARE DEDICATED PROFESSIONAL ENGINEERS.

- Single Point responsibility - Power Energy offers complete utility services under one roof with two decades of experience.
- Professional Engineering Organization with very strong technical strength offers value addition in terms of reduction of utility operating costs.
- Vast experience in handling critical segments like manufacturing industries & corporate offices which work on 24 x 7 basis.



ONE STOP SOLUTION

We, as a team act like a black box to our client! You just pay the quantity of steam consumed & focus on your core business peacefully & everything will be taking care of in the black box system! No need of client intervention for a single time! At the end experience the magic! the finish product & the quality of work! That's the POWER ENERGY USP & the reason of so many repeatative clients!



OUR SERVICES

1. O&M services

- o Cogeneration power plant
- o Boiler
- o Thermic fluid heater
- o WTP and ETP
- o Utility
- o HAG(hot air generator)

2. Engineering

- o Services
- o Steam engineering
- o energy audit
- o overhauling and maintenance services
- o trunk projects
- o fabrication and erection



OUR SERVICES

3. products

- o fans and blower
- o industrial chimney
- o heat exchanger
- o fuel handling system
- o ash handling system conveying system
- o Pollution control equipment
- o Manufacturing (Biomass fuel)
- o Chemical water treatment

*Sustainable solutions
in energy and
the environment*



PERFORMANCE BASED (KPI DRIVEN)



- Health, safety, & environment programs.
- Responsibilities with commitments- productions, plants, equipments availability.
- Maintenance services including spares.
- Development & implementation of maintenance strategy for optimized plant operation.
- Technical support & skill development
- Staffing to cater operation, mechanical, electrical & inst maintenance.

BENEFITS

- Fixed costs.
- Guaranteed availability of Equipments.
- Guaranteed performance.
- Maintenance / inspection optimization.
- No need for an in-house team of O&M staff.
- Maintenance cost reduction.
- Extended plant life.
- Plant operation flexibility.
- Increased operating safety.
- Performance improvements through innovation & cross learning.
- Availability & reliability improvements.



BUSINESS MODEL

PAY AS PER CONSUMPTION



CUSTOMER



METERED UTILITY



UTILITY PLANT



GREEN FUEL



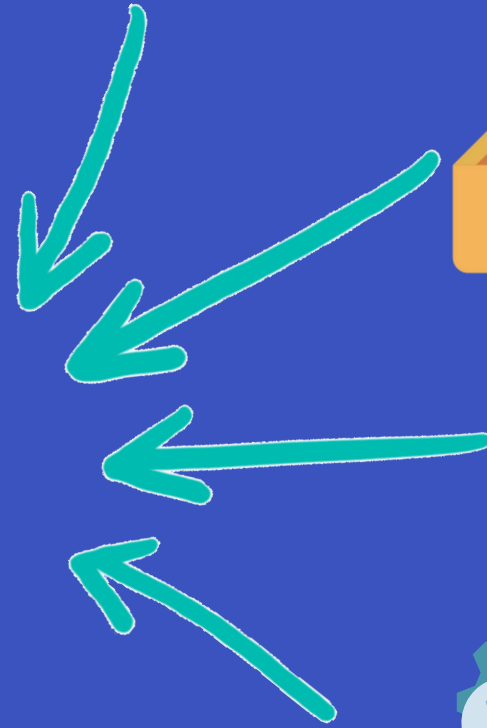
STATUTORY



TECHNOLOGY



OPERATION & MAINTENANCE



O&M OF WATER TREATMENT PLANTS

The depletion of natural resources and environmental deterioration has rendered importance to the treatment of water. Unlike other equipments water treatment systems are more critical, in terms of operation and maintenance as the parameters of raw water input varies, according to, source of supply, climatic conditions, piping & storing systems etc. Hence, monitoring the parameters regularly, changing the treatment procedures accordingly is of prime importance which necessitates Operation & Maintenance (O&M) expertise in handling these systems.

& THE PROCESS

Power Energy with its strong engineering background understands the criticality and hence we offer O&M services for the range of water treatment systems:

- Softener systems for Boilers, Cooling towers, chillers, Flushing systems etc.
- De-mineralized (D.M) plants for processes and high pressure boilers.
- Reverse Osmosis (R.O) plants for critical processes, drinking water and utility equipments.
- Maintenance of Rain water Harvesting – re-use systems.

With all its complete accessories pre-filtrations systems such as Sand filters, Activated carbon filters & all chemical dosing systems.



POWER ENERGY



WTP Erection & Commissioning

Mineral water plant complete made from SS 316. Mineral water plant is as per ISI standards. Mineral water plant complete with Raw Water Pump, Sand Filter, Carbon Filter, Anti Scalent Pump, MCF, High Pressure Pump, RO Membrane, Ozonator, Ultraviolet System etc. We are a well-recognized name that is affianced in offering our valuable clients an effective quality Drinking Water Treatment Plant. This treatment plant is widely used for killing germs like Viruses, Bacteria and Fungi.

Specifications:

- **Capacity:** 500 liters/hour to 20000 liters/hour.
- **Material Used:** Stainless steel 316 or as required by clients. Mineral water plant is complete made from SS 316 .mineral water plant is as per ISI standards. Mineral water plant is complete with raw water pump, sand filter, carbon filter, anti scalent pump, MCF, high pressure pump, r o membrane, ozonator, ultraviolet system etc. We are a wellrecognized name that is affianced in offering our valuable clients an effective quality Drinking Water Treatment Plant.

Features:

- Easy to operate.
- Less power consumption.
- Long service life.



ETP Erection Work & Commissioning

One of the most reliable ways to do that is by recycling water. Today, we at Ferric enviro care present you a reliable method to recycle water through our superior, pre-fabricated packaged waste water treatment plants. These plants have the capacity to completely treat and cleanse waste water and make it suitable for various activities like Landscaping, Floor Washing, Gardening, A/C Cooling Tower and Toilet Flushing applications. The effluent treatment plants are designed by a team of renowned engineers and scientists who've specialized in waste water management. Using newly discovered methods like high rate clarifier coagulation, precipitation with special polymer, rotating decorator, bacterial augmentation and bio-media clarification. These techniques have resulted in better efficiency and reduction of weight and power consumption.

ETP's/Wastewater Treatment: Industry Covered

- Ø Agro Based.
- Ø Brewery.
- Ø Veg & Oil Refinery.
- Ø Soft Drink Industry.
- Ø Distillery.
- Ø Tyre Company.
- Ø Dairy.
- Ø Paper Mills.
- Ø Dyeing Bleaching.
- Ø Chemical.
- Ø Pharmaceuticals.
- Ø Textile.
- Ø Meat Processing.
- Ø Tar Distillation.
- Ø Ice Cream.
- Ø Food Processing.



Features

- PROCESSES AND SOPS OF VARIOUS INPUT PARAMETERS.
- GUARANTEED OUTPUT QUALITY.
- SUPERVISION IN ENSURING THE CORRECTION PROCEDURES IN CASE OF DEVIATION IN INPUT PARAMETERS.
- LOGGING IN PARAMETERS FOR PROBLEM DIAGNOSIS.
- PREVENTIVE MAINTENANCE FOR ENHANCING LIFE OF MEMBRANES/MEDIA.

O&M OF ETP

Today water conservation is of prime importance especially with depleting water table and environmental deterioration. Hence recovery & re-use of waste water (such as Effluent) from the processes plays a vital role. SHIVAM ENTERPRISE provides specialized O&M services resulting in maximum recovery with quality for usage after secondary and tertiary treatments.

ELECTRICAL UTILITIES MANAGEMENT O&M of Electrical Utilities

We offer regular maintenance of Transformers, Control & Distributions panels, Operation & day to day maintenance of Back up D.G sets.

Features:

- Daily checking.
- Recording of Energy consumption.
- Preparation and adherence to PPM schedule.
- Equipment health and history card.
- Breakdown attendance with minimum turnaround time.
- Vendor co-ordination.



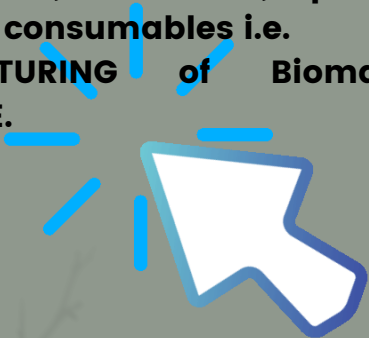
O&M OF BOILER/HEATING SYSTEM

POWER ENERGY offer O&M services for the complete range of Boilers/Heaters:

- Bio mass fired Boilers complete with Fuel & Ash Handling and Associated Facilities.
- Coal fired Boilers complete with Fuel & Ash Handling and Associated Facilities.
- Oil Fired Boilers complete with Oil handling and maintenance.
- Coil type boilers including comprehensive AMC.
- Thermic fluid Heaters (Thermopac) of any fuel type.
- Apart from Boilers the associated facilities such as condensate recovery systems & water treatment plants for Boilers (Softener, D.M) can also be handled by us.

FEATURES

- Processes to achieve Bench mark. Standards of the specific industry.
- IBR certified Boiler operators will fully man the Boilers.
- Liasoning with IBR for yearly check up.
- Complete team including semi skilled workforce for Fuel & Ash Handling.
- MIS.
- As a part of the Operations & Maintenance (O&M) Services, SE ENERGY & ENVIRO PVT LTD monitor and manages fuel quality and consumption, water quality and consumption, chemicals, spares, and other consumables i.e. **MANUFACTURING of Biomass BRIQUETTE.**



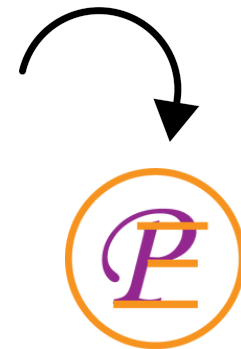
SERVICE DETAILS

- **Boiler Commissioning Services.**
- **Boiler Erection & Certification Annual Services.**
- **Boiler Erection Services.**
- **Chimney Erection Services.**
- **Chimney Fabrication.**
- **Commissioning Services.**
- **Contract for O & M of Boiler/Turbine, Chiller, Compressor, Cooling Tower, Water Treatment Plant, Effluent Treatment Plant, DG Set, and HVAC systems etc.**
- **Boiler & Accessories Installation Contract.**
- **Pipeline Fabrication Services.**
- **Steam Pipeline Fabrication Services as per IBR.**
- **Boiler Erection & Commissioning.**

PTO



www.powerenergy.co.in/



SERVICE DETAILS

Opening of a best group for boiler erection and services. We start our work with the supervision of our diligent professionals. We are one of the leading providers of an exclusive variety of Industrial Services. These solutions are

rendered under the strict supervision of our adept team who are trained and experienced in the field. Our team possesses in-depth and hands on knowledge related to the fabrication, erection and installation of Boiler and allow us

to serve the clientele in the most effective manner.

1. Boiler Service.

2. Boiler Spares Parts.

3. Biomass BRIQUETTE manufacturing.

4. Boiler Plant Erection.

5. Boiler Tube Replacing.

6. APH Tube Replacing.

7. Ducting & Piping Work.

8. PRS Installation.

9. CRS Installation.

10. Steam Utilization Equipments Settings & Installation.

11. Chimney Fabrication & Installation.



BOILER TURBINE ERECTION & COMMISSIONING

Erection, testing & commissioning servicing of Steam Turbine and auxiliaries i.e. Pumps, generators, gear box for Thermal Power Plant & combined cycle power plants.

Continuous joint effort of experienced professionals, engineers, workers and statutory approvals has been a catalyst to meet targets resulting in customer satisfaction by successfully completing and handing over projects.

The rule of law by registering for Labour Licenses, ESI Policy for sub-contractors and Electrical Inspectorate License are strictly followed in all our sites. All electrical installation work carried out by EGBPSPL complies with the provisions of the Indian Electricity Act, Indian Electricity Rules, IS Code of Practice, recommendation of the erstwhile Tariff Advisory Committee (TAC) and any other rules and regulations applicable to work.!

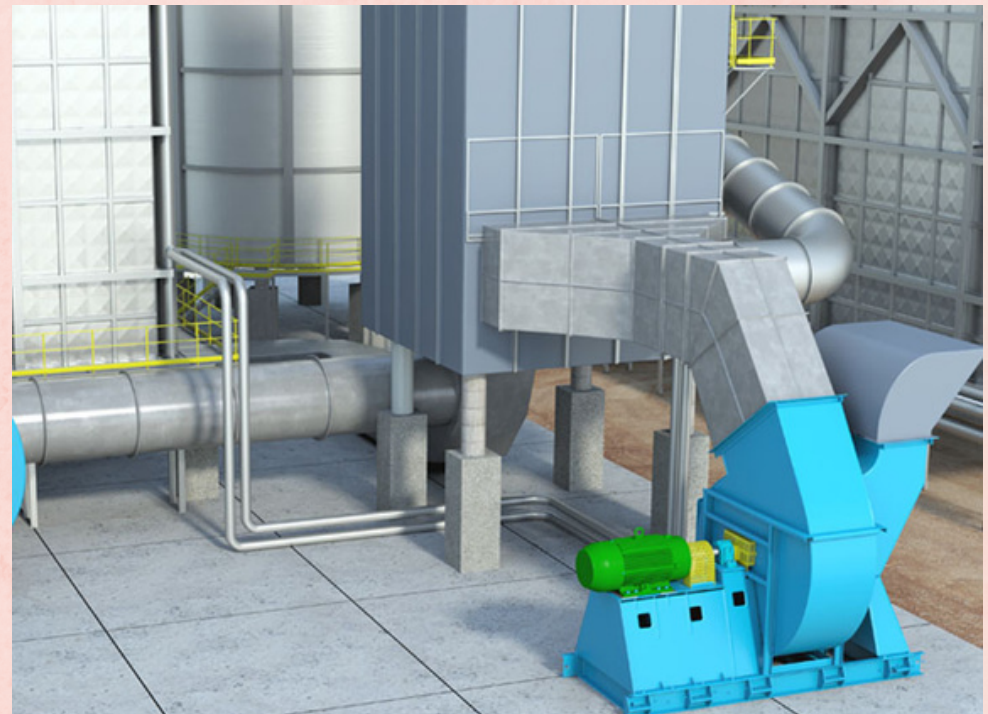


OUR PRODUCT LIST:

1> ID FAN & FD FAN

ACCESSORIES ITEM

- PULLY
- V-BELT
- BEARING SOCKET
- SERVICES



2> FILTER & SOFTNER

ACCESSORIES ITEM

- MULTIPOINT VALVE
- GRAVELS
- VESSEL
- FILTER SAND
- MNO₂
- PH & TDS METER
- CONDUCTIVITY METER
- TEST KIT
- RESIN
- SALINITY METER



3> FUEL FEEDER

ACCESSORIES ITEM

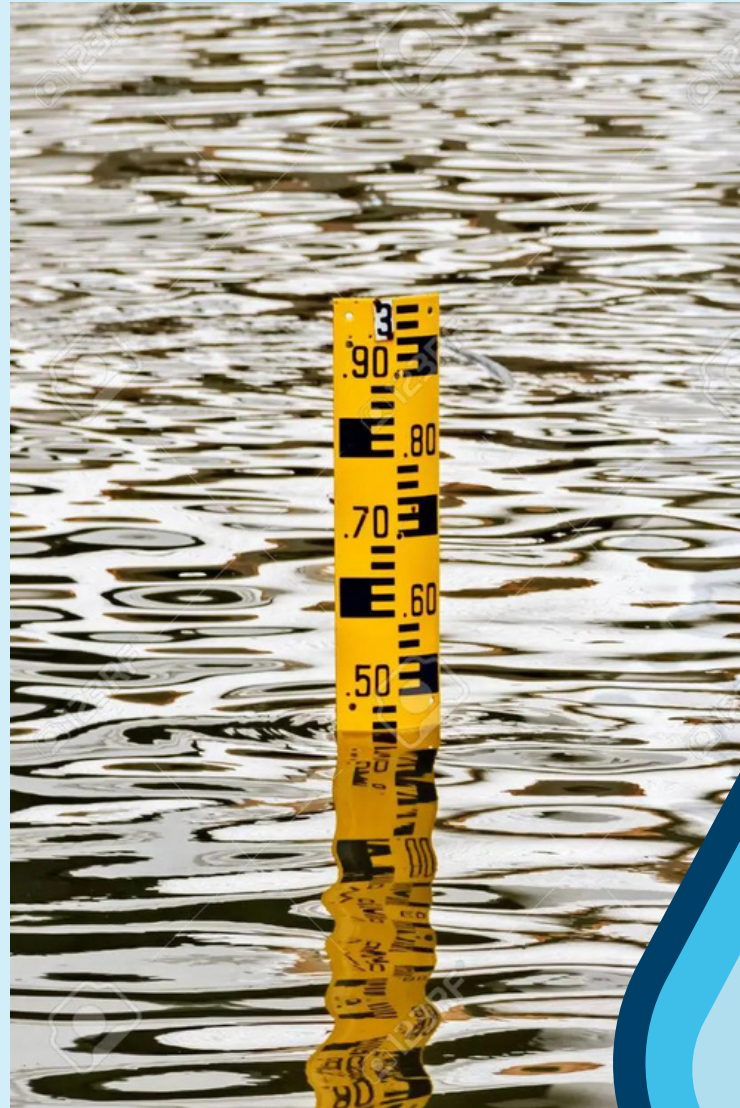
- METAL/PVC BUCKET
- RAV
- COUNTER
- MEASURING
- METER & PROXIMITY
- FOR FUEL



4> WATER LEVEL GAUGE

ACCESSORIES ITEM

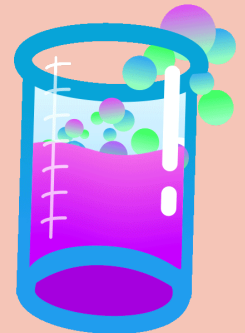
- GAUGE GLASS
- LVL CONTROLLER
- SLEEVE
- RUBBER CONE
- COCKS
- LVL SWITCH



5> CHEMICAL

ACCESSORIES ITEM

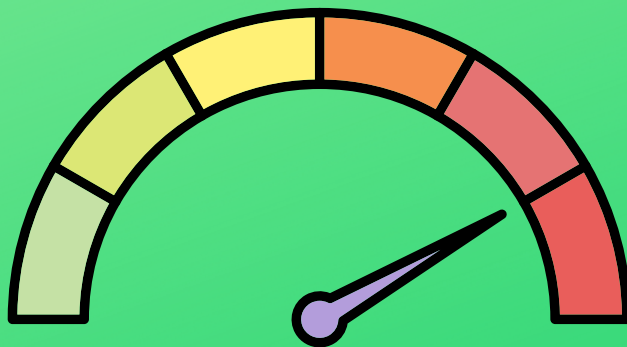
- GAUGE GLASS
- LVL CONTROLLER
- SLEEVE
- RUBBER CONE
- COCKS
- LVL SWITCH



FLOW METERS

ACCESSORIES ITEM

- ORFICE PLATE
- CONDENSATE POT
- DP TRANSMITTER
- MANIFOLD VALVE
- STEAM FLOWTOTALIZER
- ROTAMETER



FOOD INDUSTRIES

- 1) SHREE KRISHNA COMPANY MANUFACTURERS PRIVATE LIMITED(W.B.)
- 2) THACKER DAIRY PRODUCTS PRIVATE LIMITED (W.B)
- 3) GOPAL SNACKS PVT LTD(MODASA, GUJRAT)
- 4) GANPATI VANASPATI PVT LTD (BIRGANJ,NEPAL)
- 5) AMRIT VANASPATI (BIRGANJ,NEPAL)
- 6) MAHALAXMI SOLVENT AND REFINERY (BIRGANJ,NEPAL)

PAPER INDUSTRIES

- 1) KRISHNA TISSUE PAPER MILL PVT LTD (BAGNAN,WB)
- 2) RANINGA PAPERS MILL PVT LTD (AHMEDABAD, GUJARAT)
- 3) MAA KRUPA PAPER MILL PVT LTD (INDORE,MP)
- 4) ASTRON PAPER & BOARD MILL LTD(BHUJ, GUJARAT)
- 5) ASTRON PAPER & BOARD MILL LTD(HALVAD, GUJARAT)
- 6) RADHESHYAM PAPER MILLS PVT. LTD(MORBI,GUJARAT)
- 7) BALARAM PAPER PVT LTD(MEHSANA,GUJARAT)
- 8) D.N. PAPER MILL (RAJKOT,GUJRAT)
- 9)OM SHIVAY SPECIALITY PAPER PVT LTD(KADI, AHMEDABAD)
- 10) SANGAM KEJRIWAL (KONA,W.B)



CLIENTELE



TEXTILE INDUSTRIES

- 1) AMIT PRADHAN PVT LTD (BIRA, W.B)
- 2) CENTURY THREAD PVT LTD (DHULA GARH, W.B)
- 3) SAVITREXIM PVT LTD(JALAN COMPLEX, 3NO, W.B)

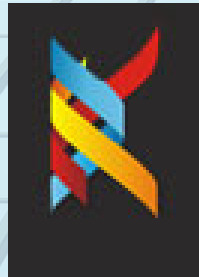


PHARMACEUTICALS CHEMICAL INDUSTRIES & OTHERS

- 1) CREST COMPOSITE & PLASTIC PVT LTD (AHMEDABAD, GUJARAT)
- 2) AMOLI INDIA PVT LTD (VADODARA, GUJARAT)
- 3) NAVPAD PIGMENT PVT LTD()



Amrit Banaspati Co. Pvt. Ltd.





CONTACT US

- **HEAD OFFICE**

299/2, Manoshi Para, Garui West,
Dum Dum, Kolkata-700 065

- **BRANCH OFFICE**

Shop No. 306, Bhagirath Icon Opp.
Narol Old Court, Narol Labha Road
Narol - Ahmedabad, Gujarat -
382405



9903874155/
8240800834



p.energy4155@gmail.com
en.power8240@gmail.com



www.powerenergy.co.in/



Welcome

CONTACT US

- **BRANCH OFFICE**

Flat no. 802 "Vraj Vatika G " New Building
apt. 8th Floor Avenue Park, Ravapar Road,
Morbi. Gujarat, 363641

